

HCBB81

高压金属化聚丙烯膜/箔式电容器 (浸渍型)



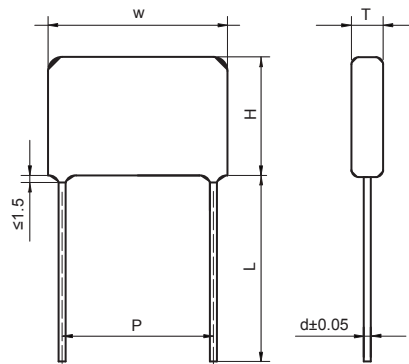
特点

- 金属化聚丙烯膜箔式卷绕结构
- 能承受高电压与高脉冲电流及特大电流冲击
- 优良散热性能，内部温升小
- 阻燃环氧粉末包封 (UL94/V-0)

主要用途

- 大屏幕显示器行逆程电路
- 适用于电子设备的高频、高电压、直流、交流和脉冲电路
- 适用于开关电源、电子镇流器

外形示意图



引线形状

I	II	III	III
$P \geq F$		$P < F$	
$0\text{mm} \leq P-F \leq 3\text{mm}$	$3\text{mm} < P-F \leq 8\text{mm}$	$3\text{mm} < F-P \leq 5\text{mm}$	$0\text{mm} < P-F \leq 3\text{mm}$
$F \pm 0.8\text{mm}; A \leq 4.5\text{mm}; B = 4.0 \pm 0.5\text{mm}$			

技术要求

引用标准	GB/T14579(IEC60384-17)			
气候类别	40/105/21			
工作温度范围	-40°C~+105°C (+85°C~+105°C : 温度每升高 1 度额定电压降低 1.25%)			
额定温度	85°C			
额定电压	630V , 800V, 1000V , 1250V , 1600V , 2000V			
电容量范围	0.0010μF~0.1μF			
电容量偏差	±5%(J) ±10%(K)			
耐电压	1.75U _R (5s)			
损耗角正切	≤0.0010(1kHz , 20°C) ≤0.0020(10kHz , 20°C)			
绝缘电阻	≥100 000MΩ (20 °C , 100V , 1min)			
最大脉冲爬升速率：若实际工作电压 U 比额定电压 U _R 低，电容器可工作在更高的 dV/dt 场合，这样 dV/dt 值应为右表值乘以 U _R /U。	U _R (V)	dV/dt(V/μs)		
		P=10.0	P=15.0	P=20.0
	630/800	11500	10000	8300
	1000/1250	15000	13200	11000
	1600	/	16000	13000
2000	/	18500	15500	

产品订货标记

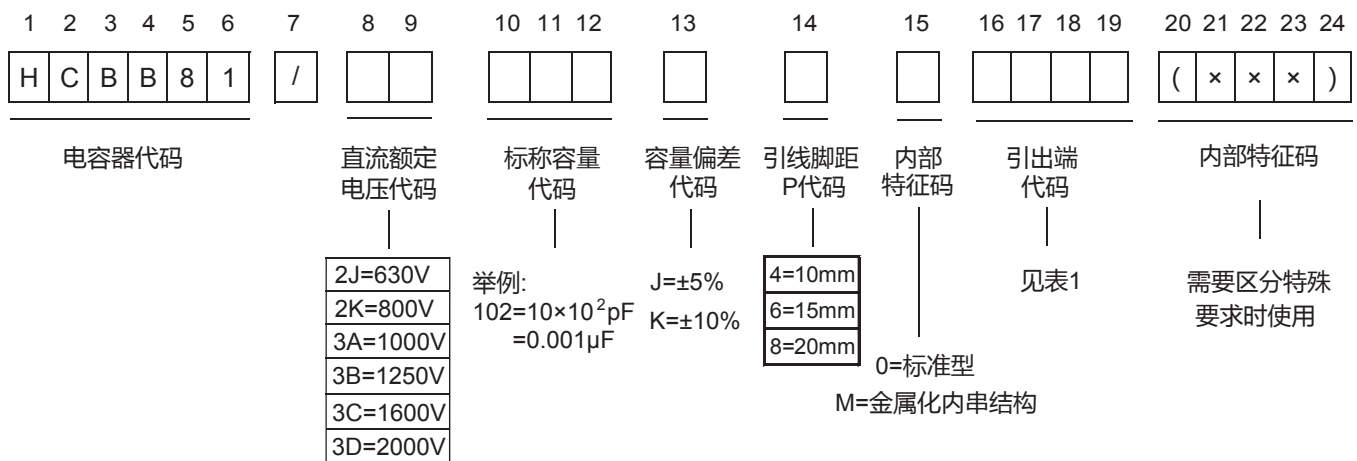


表1：引出端代码

第 16 位		第 17 位		第 18 位		第 19 位	
代码	说明	代码	说明	代码	说明	代码	说明
A	弹带包装	2	F=5.0mm	0	表示直脚	1	产品在连续的两个载带孔之间 P3=12.7mm, H=18.0mm (Pitch=5.0/7.5mm)
						5	P3=25.4mm, H=18.0mm (Pitch=10.0/15.0mm)
		3 4 6	F=7.5mm F=10.0mm F=15.0mm	1	表示弯脚	A	产品在连续的两个载带孔之间 P3=12.7mm, H=20.0mm (Pitch=5.0/7.5mm)
						E	P3=25.4mm, H=20.0mm (Pitch=10.0/15.0mm)
F	引线成型	2	F=5.0mm	0	B=4.0mm	0	B 的长度偏差± 0.5mm
		3	F=7.5mm				
		4	F=10.0mm				
		6	F=15.0mm				
C	散装直脚	00	标准的引线长度 18mm(最小)		0	0	引线长度偏差± 0.5mm
		40	引线长度 4.0mm				

产品尺寸

800/630Vd.c.(400Va.c.)							800/630Vd.c.(400Va.c.)						
C _N (μF)	W mm	H mm	T mm	P mm	d mm	产品订货标记	C _N (μF)	W mm	H mm	T mm	P mm	d mm	产品订货标记
0.001	13.0	9.0	4.5	10.0	0.6	HCBB81/2K102-40****	0.0036	18.0	10.0	4.7	15.0	0.6	HCBB81/2K362-60****
0.0012	13.0	9.2	4.8	10.0	0.6	HCBB81/2K122-40****	0.0039	18.0	10.0	4.8	15.0	0.6	HCBB81/2K392-60****
0.0015	13.0	10.2	5.0	10.0	0.6	HCBB81/2K152-40****	0.0043	18.0	10.2	5.0	15.0	0.6	HCBB81/2K432-60****
0.0018	13.0	10.5	5.2	10.0	0.6	HCBB81/2K182-40****	0.0047	18.0	10.0	4.8	15.0	0.6	HCBB81/2K472-60****
0.0022	13.0	10.0	4.5	10.0	0.6	HCBB81/2K222-40****	0.0049	18.0	10.0	4.8	15.0	0.6	HCBB81/2K492-60****
0.0027	13.0	10.2	5.0	10.0	0.6	HCBB81/2K272-40****	0.0051	18.0	10.0	5.0	15.0	0.6	HCBB81/2K512-60****
0.003	13.0	10.0	4.8	10.0	0.6	HCBB81/2K302-40****	0.0053	18.0	10.2	5.0	15.0	0.6	HCBB81/2K532-60****
0.0033	13.0	10.2	5.0	10.0	0.6	HCBB81/2K332-40****	0.0056	18.0	10.3	5.0	15.0	0.6	HCBB81/2K562-60****
0.0036	13.0	10.0	4.7	10.0	0.6	HCBB81/2K362-40****	0.0062	18.0	10.0	4.8	15.0	0.6	HCBB81/2K622-60****

备注：(1) “-”表示容量等级，J=±5%，K=±10%；
 (2) “****”表示引线加工和包装代码(见表1)；
 (3) 当额定直流电压为630V时，第8~9位是2J。

产品尺寸

800/630Vd.c.(400Va.c.)							800/630Vd.c.(400Va.c.)						
C _N (μF)	W mm	H mm	T mm	P mm	d mm	产品订货标记	C _N (μF)	W mm	H mm	T mm	P mm	d mm	产品订货标记
0.0039	13.0	10.1	4.8	10.0	0.6	HCBB81/2K392-40****	0.0068	18.0	10.2	5.0	15.0	0.6	HCBB81/2K682-60****
0.0043	13.0	10.2	5.0	10.0	0.6	HCBB81/2K432-40****	0.0075	18.0	10.4	5.1	15.0	0.6	HCBB81/2K752-60****
0.0047	13.0	10.0	4.7	10.0	0.6	HCBB81/2K472-40****	0.0082	18.0	10.1	4.8	15.0	0.6	HCBB81/2K822-60****
0.0049	13.0	10.0	4.8	10.0	0.6	HCBB81/2K492-40****	0.0091	18.0	10.2	5.0	15.0	0.6	HCBB81/2K912-60****
0.0051	13.0	10.0	5.0	10.0	0.6	HCBB81/2K512-40****	0.01	18.0	10.4	5.2	15.0	0.6	HCBB81/2K103-60****
0.0053	13.0	10.2	5.0	10.0	0.6	HCBB81/2K532-40****	0.012	18.0	10.2	5.0	15.0	0.6	HCBB81/2K123-60****
0.0056	13.0	10.3	5.0	10.0	0.6	HCBB81/2K562-40****	0.015	18.0	10.6	5.4	15.0	0.6	HCBB81/2K153-60****
0.0062	13.0	10.5	5.2	10.0	0.6	HCBB81/2K622-40****	0.018	18.0	11.6	5.6	15.0	0.6	HCBB81/2K183-60****
0.0068	13.0	10.5	5.5	10.0	0.6	HCBB81/2K682-40****	0.022	18.0	12.0	6.0	15.0	0.6	HCBB81/2K223-60****
0.0075	13.0	11.0	5.6	10.0	0.6	HCBB81/2K752-40****	0.027	18.0	12.5	6.5	15.0	0.8	HCBB81/2K273-60****
0.0082	13.0	11.0	5.8	10.0	0.6	HCBB81/2K822-40****	0.033	18.0	13.2	7.2	15.0	0.8	HCBB81/2K333-60****
0.0091	13.0	11.3	6.0	10.0	0.6	HCBB81/2K912-40****	0.036	18.0	13.5	7.5	15.0	0.8	HCBB81/2K363-60****
0.01	13.0	11.5	6.3	10.0	0.8	HCBB81/2K103-40****	0.039	18.0	13.8	7.8	15.0	0.8	HCBB81/2K393-60****
0.012	13.0	12.0	6.8	10.0	0.8	HCBB81/2K123-40****	0.047	18.0	14.5	8.5	15.0	0.8	HCBB81/2K473-60****
0.015	13.0	13.2	7.2	10.0	0.8	HCBB81/2K153-40****	0.049	18.0	14.5	8.5	15.0	0.8	HCBB81/2K493-60****
0.001	13.0	9.5	5.1	15.0	0.6	HCBB81/2K102-60****	0.051	18.0	14.8	8.8	15.0	0.8	HCBB81/2K513-60****
0.0012	18.0	9.7	5.3	15.0	0.6	HCBB81/2K122-60****	0.056	18.0	16.0	8.6	15.0	0.8	HCBB81/2K563-60****
0.0015	18.0	10.2	5.0	15.0	0.6	HCBB81/2K152-60****	0.062	18.0	16.6	9.0	15.0	0.8	HCBB81/2K623-60****
0.0018	18.0	10.3	5.0	15.0	0.6	HCBB81/2K182-60****	0.068	18.0	17.0	9.5	15.0	0.8	HCBB81/2K683-60****
0.0022	18.0	10.5	5.0	15.0	0.6	HCBB81/2K222-60****	0.075	18.0	17.5	10.0	15.0	0.8	HCBB81/2K753-60****
0.0027	18.0	10.0	5.0	15.0	0.6	HCBB81/2K272-60****	0.082	18.0	17.9	10.3	15.0	0.8	HCBB81/2K823-60****
0.003	18.0	10.3	5.0	15.0	0.6	HCBB81/2K302-60****	0.1	18.0	19.9	10.8	15.0	0.8	HCBB81/2K104-60****
0.0033	18.0	10.5	5.3	15.0	0.6	HCBB81/2K332-60****							

备注：(1) “-”表示容量等级，J=±5%，K=±10%；
(2) “****”表示引线加工和包装代码(见表1)；
(3) 当额定直流电压为630V时，第8~9位是2J。

产品尺寸

1000/1250Vd.c.(450Va.c.)							1000/1250Vd.c.(450Va.c.)						
C _N (μ F)	W mm	H mm	T mm	P mm	d mm	产品订货标记	C _N (μ F)	W mm	H mm	T mm	P mm	d mm	产品订货标记
0.001	13.0	9.0	4.5	10.0	0.6	HCBB81/3A102-40****	0.001	18.0	9.5	5.1	15.0	0.6	HCBB81/3A102-60****
0.0012	13.0	9.2	4.8	10.0	0.6	HCBB81/3A122-40****	0.0012	18.0	9.7	5.3	15.0	0.6	HCBB81/3A122-60****
0.0015	13.0	10.0	5.0	10.0	0.6	HCBB81/3A152-40****	0.0015	18.0	10.2	5.0	15.0	0.6	HCBB81/3A152-60****
0.0018	13.0	10.5	5.3	10.0	0.6	HCBB81/3A182-40****	0.0018	18.0	10.3	5.0	15.0	0.6	HCBB81/3A182-60****
0.0022	13.0	11.0	5.7	10.0	0.6	HCBB81/3A222-40****	0.0022	18.0	10.4	5.1	15.0	0.6	HCBB81/3A222-60****
0.0027	13.0	9.9	4.6	10.0	0.6	HCBB81/3A272-40****	0.0027	18.0	10.1	5.0	15.0	0.6	HCBB81/3A272-60****
0.003	13.0	10.0	4.8	10.0	0.6	HCBB81/3A302-40****	0.003	18.0	10.3	5.1	15.0	0.6	HCBB81/3A302-60****
0.0033	13.0	10.0	4.8	10.0	0.6	HCBB81/3A332-40****	0.0033	18.0	10.5	5.3	15.0	0.6	HCBB81/3A332-60****
0.0036	13.0	10.1	5.0	10.0	0.6	HCBB81/3A362-40****	0.0036	18.0	10.0	4.7	15.0	0.6	HCBB81/3A362-60****
0.0039	13.0	10.3	5.1	10.0	0.6	HCBB81/3A392-40****	0.0039	18.0	10.1	4.8	15.0	0.6	HCBB81/3A392-60****
0.0043	13.0	10.5	5.3	10.0	0.6	HCBB81/3A432-40****	0.0043	18.0	10.2	5.0	15.0	0.6	HCBB81/3A432-60****
0.0047	13.0	10.7	5.4	10.0	0.6	HCBB81/3A472-40****	0.0047	18.0	10.4	5.2	15.0	0.6	HCBB81/3A472-60****
0.0049	13.0	10.8	5.5	10.0	0.6	HCBB81/3A492-40****	0.0049	18.0	10.5	5.3	15.0	0.6	HCBB81/3A492-60****
0.0051	13.0	10.8	5.6	10.0	0.6	HCBB81/3A512-40****	0.0051	18.0	10.6	5.3	15.0	0.6	HCBB81/3A512-60****
0.0053	13.0	11.0	5.7	10.0	0.6	HCBB81/3A532-40****	0.0053	18.0	10.6	5.4	15.0	0.6	HCBB81/3A532-60****
0.0056	13.0	11.1	5.8	10.0	0.6	HCBB81/3A562-40****	0.0056	18.0	10.8	5.5	15.0	0.6	HCBB81/3A562-60****
0.0062	13.0	11.3	6.0	10.0	0.6	HCBB81/3A622-40****	0.0062	18.0	10.5	5.2	15.0	0.6	HCBB81/3A622-60****
0.0068	13.0	11.5	6.3	10.0	0.8	HCBB81/3A682-40****	0.0068	18.0	10.5	5.5	15.0	0.6	HCBB81/3A682-60****
0.0075	13.0	11.8	6.6	10.0	0.8	HCBB81/3A752-40****	0.0075	18.0	10.9	5.6	15.0	0.6	HCBB81/3A752-60****
0.0082	13.0	12.1	6.8	10.0	0.8	HCBB81/3A822-40****	0.0082	18.0	11.1	5.8	15.0	0.6	HCBB81/3A822-60****
0.0091	13.0	12.4	7.1	10.0	0.8	HCBB81/3A912-40****	0.0091	18.0	11.3	6.2	15.0	0.6	HCBB81/3A912-60****
0.01	13.0	13.1	7.1	10.0	0.8	HCBB81/3A103-40****	0.01	18.0	11.5	6.3	15.0	0.8	HCBB81/3A103-60****
0.012	13.0	13.7	7.7	10.0	0.8	HCBB81/3A123-40****	0.012	18.0	12.1	6.8	15.0	0.8	HCBB81/3A123-60****
0.015	13.0	15.5	8.0	10.0	0.8	HCBB81/3A153-40****	0.015	18.0	12.7	7.5	15.0	0.8	HCBB81/3A153-60****
							0.018	18.0	13.8	7.8	15.0	0.8	HCBB81/3A183-60****
							0.022	18.0	14.5	8.6	15.0	0.8	HCBB81/3A223-60****
							0.027	18.0	15.5	9.5	15.0	0.8	HCBB81/3A273-60****
							0.033	18.0	16.5	10.5	15.0	0.8	HCBB81/3A333-60****

备注：(1) “-”表示容量等级，J=±5%，K=±10%；
(2) “****”表示引线加工和包装代码(见表1)；
(3) 当额定直流电压为1250V时，第8~9位是3B。

产品尺寸

1600Vd.c.(450Va.c.)							1600Vd.c.(450Va.c.)						
C _N (μF)	W mm	H mm	T mm	P mm	d mm	产品订货标记	C _N (μF)	W mm	H mm	T mm	P mm	d mm	产品订货标记
0.001	18.0	9.5	5.1	15.0	0.6	HCBB81/3C102-60****	0.001	23.0	9.2	4.8	20.0	0.6	HCBB81/3C102-80****
0.0012	18.0	9.7	5.3	15.0	0.6	HCBB81/3C122-60****	0.0012	23.0	9.3	4.9	20.0	0.6	HCBB81/3C122-80****
0.0015	18.0	10.2	5.0	15.0	0.6	HCBB81/3C152-60****	0.0015	23.0	9.7	5.3	20.0	0.6	HCBB81/3C152-80****
0.0018	18.0	10.3	5.0	15.0	0.6	HCBB81/3C182-60****	0.0018	23.0	9.5	5.0	20.0	0.6	HCBB81/3C182-80****
0.0022	18.0	10.5	5.1	15.0	0.6	HCBB81/3C222-60****	0.0022	23.0	10.3	5.1	20.0	0.6	HCBB81/3C222-80****
0.0027	18.0	10.8	5.5	15.0	0.6	HCBB81/3C272-60****	0.0027	23.0	10.2	5.0	20.0	0.6	HCBB81/3C272-80****
0.003	18.0	11.0	5.8	15.0	0.6	HCBB81/3C302-60****	0.003	23.0	10.5	5.2	20.0	0.6	HCBB81/3C302-80****
0.0033	18.0	11.5	5.5	15.0	0.6	HCBB81/3C332-60****	0.0033	23.0	11.1	5.1	20.0	0.6	HCBB81/3C332-80****
0.0036	18.0	11.7	5.7	15.0	0.6	HCBB81/3C362-60****	0.0036	23.0	11.3	5.3	20.0	0.6	HCBB81/3C362-80****
0.0039	18.0	11.5	5.5	15.0	0.6	HCBB81/3C392-60****	0.0039	23.0	11.5	5.5	20.0	0.6	HCBB81/3C392-80****
0.0043	18.0	11.8	5.8	15.0	0.6	HCBB81/3C432-60****	0.0043	23.0	11.7	5.7	20.0	0.6	HCBB81/3C432-80****
0.0047	18.0	12.0	6.0	15.0	0.6	HCBB81/3C472-60****	0.0047	23.0	12.0	6.0	20.0	0.6	HCBB81/3C472-80****
0.0049	18.0	12.0	6.1	15.0	0.6	HCBB81/3C492-60****	0.0049	23.0	12.0	6.0	20.0	0.6	HCBB81/3C492-80****
0.0051	18.0	12.2	6.1	15.0	0.6	HCBB81/3C512-60****	0.0051	23.0	12.1	6.1	20.0	0.6	HCBB81/3C512-80****
0.0053	18.0	12.3	6.3	15.0	0.8	HCBB81/3C532-60****	0.0053	23.0	12.2	6.1	20.0	0.6	HCBB81/3C532-80****
0.0056	18.0	12.5	6.5	15.0	0.8	HCBB81/3C562-60****	0.0056	23.0	12.3	6.3	20.0	0.8	HCBB81/3C562-80****
0.0062	18.0	12.7	6.7	15.0	0.8	HCBB81/3C622-60****	0.0062	23.0	12.6	6.6	20.0	0.8	HCBB81/3C622-80****
0.0068	18.0	13.0	7.0	15.0	0.8	HCBB81/3C682-60****	0.0068	23.0	13.0	7.0	20.0	0.8	HCBB81/3C682-80****
0.0075	18.0	13.3	7.3	15.0	0.8	HCBB81/3C752-60****	0.0075	23.0	13.2	7.2	20.0	0.8	HCBB81/3C752-80****
0.0082	18.0	13.6	7.6	15.0	0.8	HCBB81/3C822-60****	0.0082	23.0	13.4	7.5	20.0	0.8	HCBB81/3C822-80****
0.0091	18.0	14.0	8.0	15.0	0.8	HCBB81/3C912-60****	0.0091	23.0	13.8	7.8	20.0	0.8	HCBB81/3C912-80****
0.01	18.0	14.3	8.3	15.0	0.8	HCBB81/3C103-60****	0.01	23.0	14.1	8.1	20.0	0.8	HCBB81/3C103-80****
0.012	18.0	15.0	9.0	15.0	0.8	HCBB81/3C123-60****	0.012	23.0	14.8	8.8	20.0	0.8	HCBB81/3C123-80****
0.015	18.0	16.9	9.5	15.0	0.8	HCBB81/3C153-60****	0.015	23.0	15.8	9.8	20.0	0.8	HCBB81/3C153-80****
0.018	18.0	17.8	10.2	15.0	0.8	HCBB81/3C183-60****	0.018	23.0	16.7	10.7	20.0	0.8	HCBB81/3C102-80****

备注：(1)“-”表示容量等级，J=±5%，K=±10%；
(2)“****”表示引线加工和包装代码(见表1)。

产品尺寸

2000Vd.c.(500Va.c.)							2000Vd.c.(500Va.c.)						
C _N (μ F)	W mm	H mm	T mm	P mm	d mm	产品订货标记	C _N (μ F)	W mm	H mm	T mm	P mm	d mm	产品订货标记
0.001	18.0	9.3	5.0	15.0	0.6	HCBB81/3D102-60****	0.001	23.0	9.2	4.8	20.0	0.6	HCBB81/3D102-80****
0.0012	18.0	9.5	5.1	15.0	0.6	HCBB81/3D122-60****	0.0012	23.0	9.3	5.0	20.0	0.6	HCBB81/3D122-80****
0.0015	18.0	10.0	4.8	15.0	0.6	HCBB81/3D152-60****	0.0015	23.0	9.7	5.3	20.0	0.6	HCBB81/3D152-80****
0.0018	18.0	10.3	5.1	15.0	0.6	HCBB81/3D182-60****	0.0018	23.0	9.5	5.0	20.0	0.6	HCBB81/3D182-80****
0.0022	18.0	10.7	5.5	15.0	0.6	HCBB81/3D222-60****	0.0022	23.0	10.3	5.1	20.0	0.6	HCBB81/3D222-80****
0.0027	18.0	11.2	5.9	15.0	0.6	HCBB81/3D272-60****	0.0027	23.0	10.7	5.5	20.0	0.6	HCBB81/3D272-80****
0.003	18.0	11.4	6.2	15.0	0.8	HCBB81/3D302-60****	0.003	23.0	11.0	5.7	20.0	0.6	HCBB81/3D302-80****
0.0033	18.0	11.7	6.5	15.0	0.8	HCBB81/3D332-60****	0.0033	23.0	11.7	5.7	20.0	0.6	HCBB81/3D332-80****
0.0036	18.0	12.0	6.7	15.0	0.8	HCBB81/3D362-60****	0.0036	23.0	12.0	6.0	20.0	0.6	HCBB81/3D362-80****
0.0039	18.0	12.1	6.9	15.0	0.8	HCBB81/3D392-60****	0.0039	23.0	12.1	6.1	20.0	0.6	HCBB81/3D392-80****
0.0043	18.0	12.4	7.2	15.0	0.8	HCBB81/3D432-60****	0.0043	23.0	12.3	6.3	20.0	0.8	HCBB81/3D432-80****
0.0047	18.0	12.7	7.5	15.0	0.8	HCBB81/3D472-60****	0.0047	23.0	12.5	6.5	20.0	0.8	HCBB81/3D472-80****
0.0049	18.0	12.8	7.6	15.0	0.8	HCBB81/3D492-60****	0.0049	23.0	12.7	6.6	20.0	0.8	HCBB81/3D492-80****
0.0051	18.0	13.0	7.7	15.0	0.8	HCBB81/3D512-60****	0.0051	23.0	12.8	6.8	20.0	0.8	HCBB81/3D512-80****
0.0053	18.0	13.1	8.0	15.0	0.8	HCBB81/3D532-60****	0.0053	23.0	13.0	7.0	20.0	0.8	HCBB81/3D532-80****
0.0056	18.0	13.3	8.1	15.0	0.8	HCBB81/3D562-60****	0.0056	23.0	13.0	7.0	20.0	0.8	HCBB81/3D562-80****
0.0062	18.0	13.6	8.5	15.0	0.8	HCBB81/3D622-60****	0.0062	23.0	13.5	7.5	20.0	0.8	HCBB81/3D622-80****
0.0068	18.0	14.0	8.8	15.0	0.8	HCBB81/3D682-60****	0.0068	23.0	13.7	7.7	20.0	0.8	HCBB81/3D682-80****
0.0075	18.0	14.4	9.2	15.0	0.8	HCBB81/3D752-60****	0.0075	23.0	14.0	8.0	20.0	0.8	HCBB81/3D752-80****
0.0082	18.0	15.2	9.2	15.0	0.8	HCBB81/3D822-60****	0.0082	23.0	14.3	8.3	20.0	0.8	HCBB81/3D822-80****
0.0091	18.0	15.7	9.7	15.0	0.8	HCBB81/3D912-60****	0.0091	23.0	14.8	8.7	20.0	0.8	HCBB81/3D912-80****
0.01	18.0	16.1	10.1	15.0	0.8	HCBB81/3D103-60****	0.01	23.0	15.0	9.1	20.0	0.8	HCBB81/3D103-80****
0.012	18.0	17.0	11.0	15.0	0.8	HCBB81/3D123-60****	0.012	23.0	16.0	10.0	20.0	0.8	HCBB81/3D123-80****
							0.015	23.0	17.0	11.0	20.0	0.8	HCBB81/3D153-80****

备注：(1) “-”表示容量等级，J=±5%，K=±10%；
(2) “****”表示引线加工和包装代码(见表1)。